

Q: Is 5GHz WiFi supported?

A: No. Only 2.4GHz WiFi is supported.

Q: My signal is poor on my doorbell?

A: Your doorbell maybe too far away from your wireless router or you may have some obstructions in between that reduce signal strength. You might try repositioning your router or getting a signal extender/repeater for your wireless router.

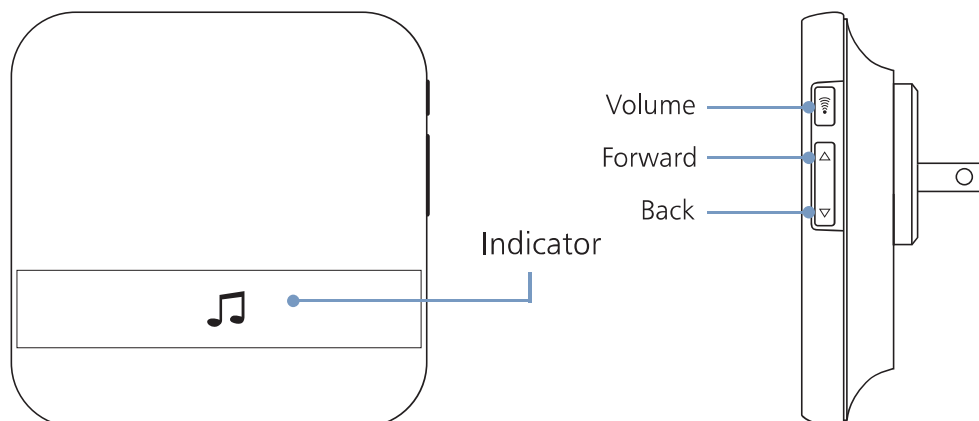
Wireless Chime (Optional)

Connect the video doorbell to the doorbell chime, and get instant alert in your home when someone rings the doorbell. Hear the doorbell chime when you are home, without checking your video doorbell app! The chime plugs into any wall outlet, you can place it anywhere in the home.

NOTICE:

The video doorbell is only compatible with our wireless chime, and not compatible with traditional doorbell chimes. The wireless chime is optional. If it is not installed, doorbell notifications will still go directly to the ToSee app.

1. The Basics

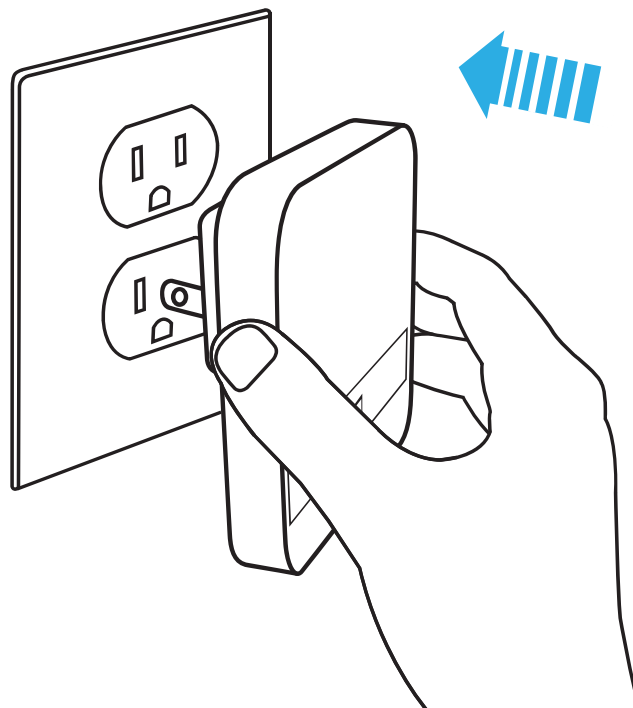
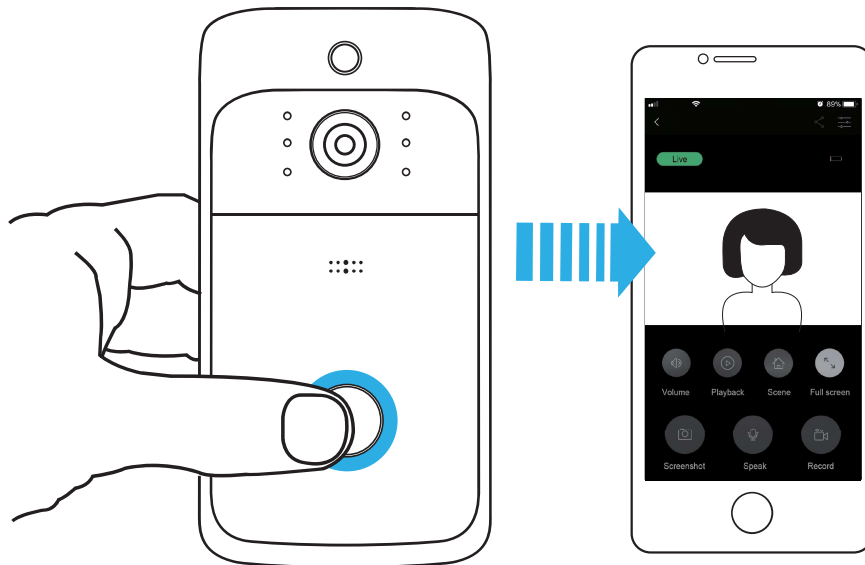


2. Getting Started

Set up your chime with the video doorbell

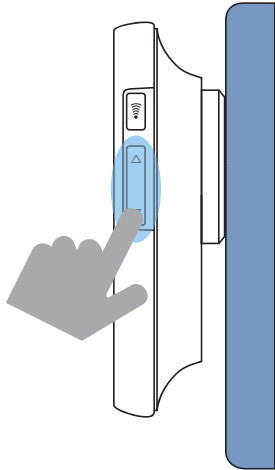
Step 1

Before the setup process, be sure your video doorbell has connected to your phone and plug in your chime.



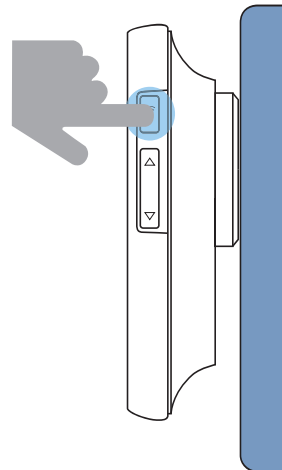
Step 2

Press the forward or back button to cycle through 52 different tunes and select a tune.



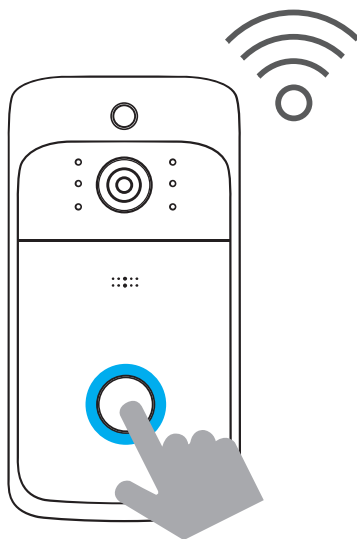
Step 3

Press and hold the volume button for 5 seconds until the blue indicator is ON.



Step 4

Press the doorbell button.



Step 5

Press the doorbell button again, the chime will automatically play the tune you selected.

