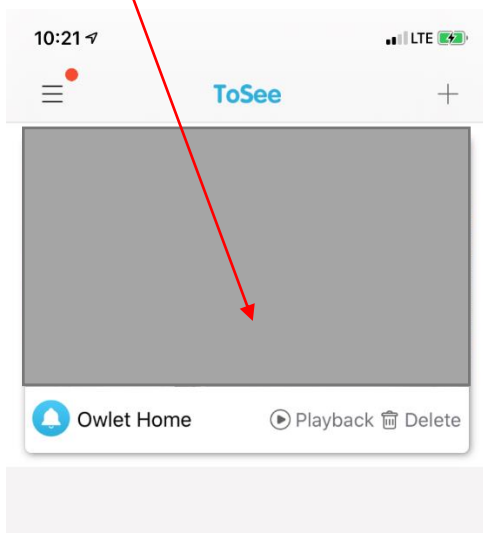


# How to Format SD Card

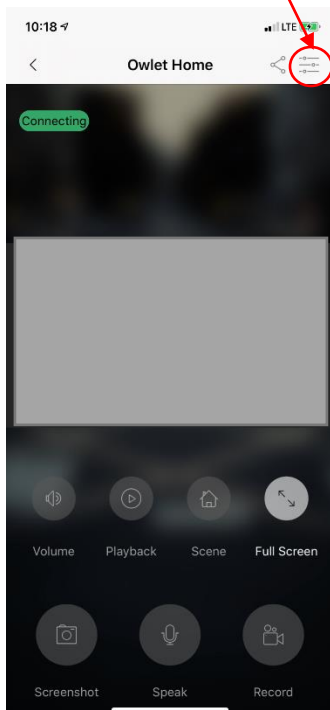
Here is the instruction to show you how to Format SD Card of Owlet Home Video Doorbell.

**Step 1: Open the ToSee APP**

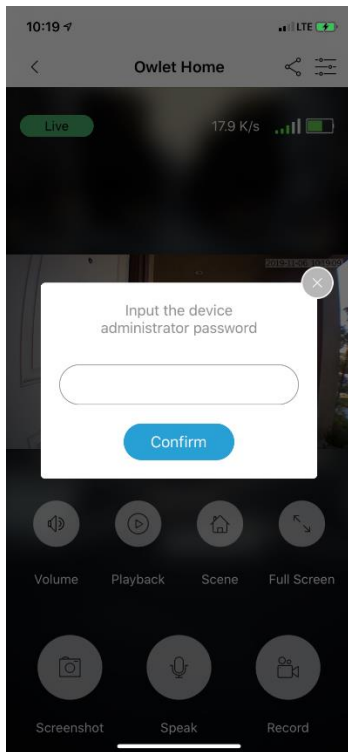
**Step 2: Click it for Live View**



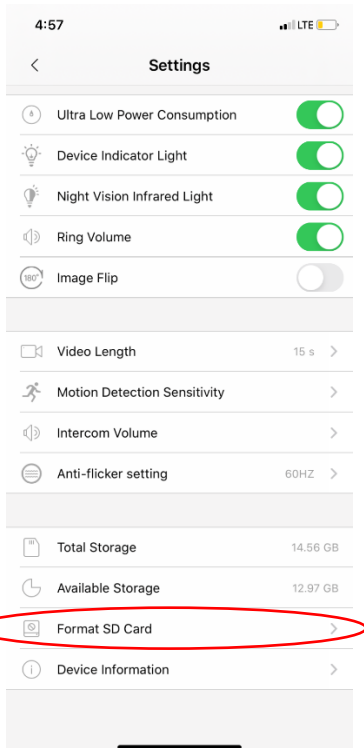
**Step 3: Click the Setting button on top right**



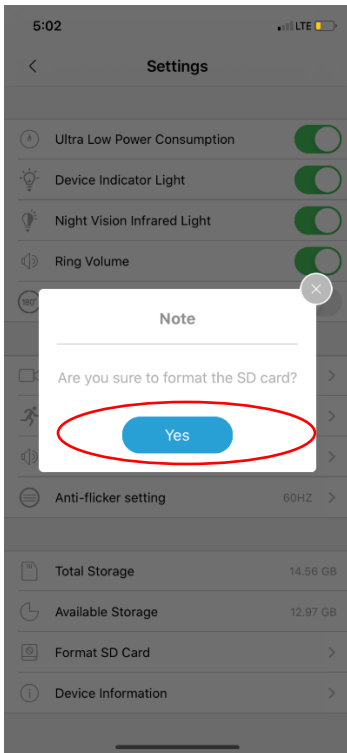
**Step 4: Enter your admin password and click confirm.**



**Step 5: Click Format SD Card**



**Step 6: Click Yes to confirm.** Caution: You are going to delete all saved video clips. Please click X on top right of the pop up message window if you don't want to delete all your saved video clips.



**Step 7: You will see a Grey pop-up message window of “Format SD card Succeeded!”**. If you see a message window of “Format SD Card Failed”. Please try to plug out and plug in SD card (see instruction to find where is the SD card), then try to format again. If you still can't format the SD Card, please send email to [support@owlethome.com](mailto:support@owlethome.com). Our support team will provide the best solution for you.

