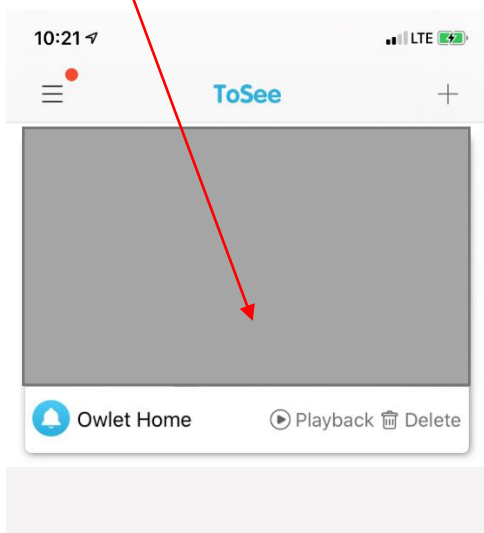


How to Adjust Motion Detection Sensitivity

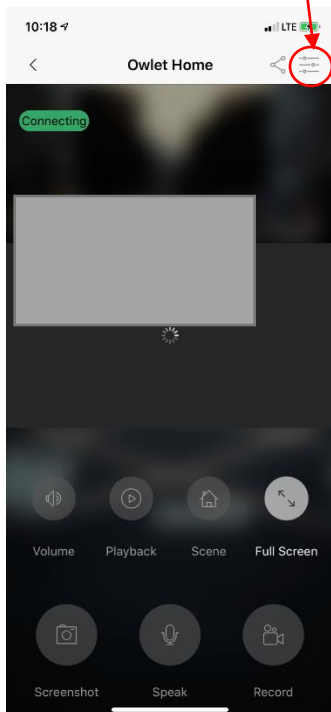
Here is the instruction to show you how to adjust motion detection sensitivity for Owlet Home Video Doorbell.

Step 1: Open the ToSee APP

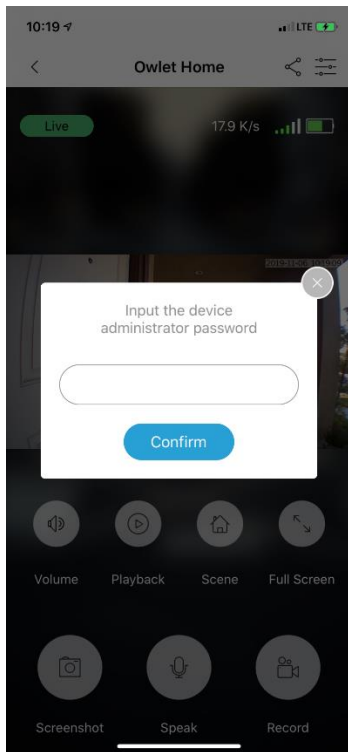
Step 2: Click it for Live View



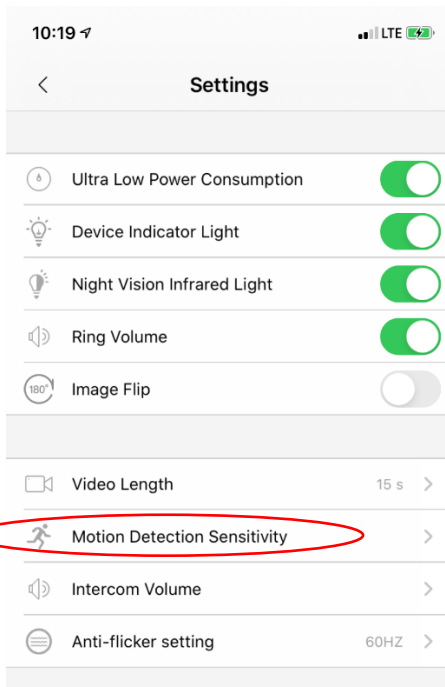
Step 3: Click the Setting button on top right



Step 4: Enter your admin password and click confirm.



Step 5: Click Motion Detection Sensitivity



Step 6: Adjust the sensitivity level by drag the toggle. It could be set as off, low medium and high.

