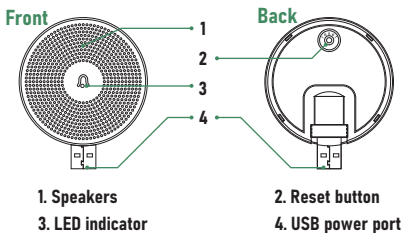


Quick Start Guide

support@owlethome.com

Owlet Home LLC Based in California, USA

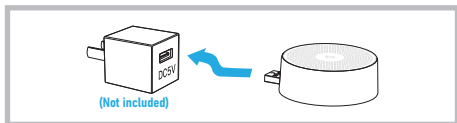
1. Meet the chime



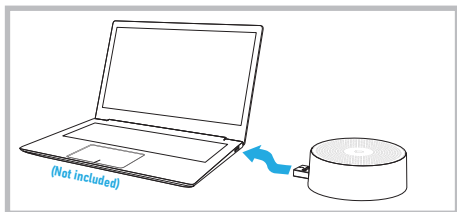
2. Power up device

The chime can be powered by an USB compatible phone charger (DC5V 1A). You can also plug the chime to the USB port on your PC/notebook to supply power.

1. Power by DC5V adapter



2. Power by PC's USB Port



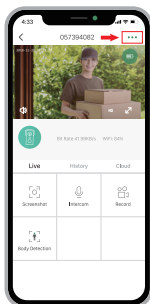
3. Pair with Doorbell

➤ Preparations

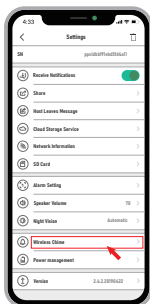
1. Configure Wi-Fi for the doorbell and add it to APP device list.
2. Supply power to the Chime.
3. Place the doorbell close to the Chime before pairing.

➤ Pairing steps

1. Tap on "..." and enter into Settings, select **Wireless Chime**. Tap on the  icon to go to the pairing page.



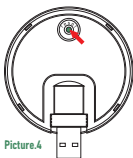
Picture.1



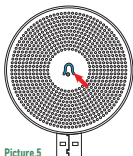
Picture.2



Picture.3



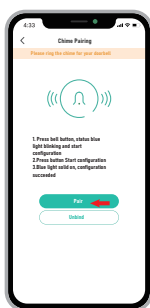
Picture.4



Picture.5

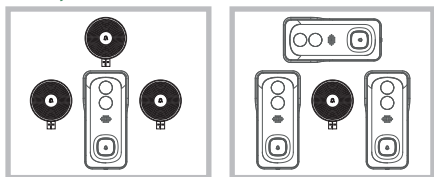
2. Short click on the reset button behind the chime, and the LED indicator flashes blue, indicating the device is in pairing mode.

3. Tap "Pair" in the APP, and the doorbell will send a pairing signal to the chime. Pairing succeeds and the indicator on the Chime will be in solid blue. Then you can push the doorbell button to test the result.



Picture.6

Note: The doorbells and indoor chimes support “one-to-many” and “many-to-one” wireless connection.



➤ Unbond

1. Press and hold reset button on the chime for about 5 seconds till the indicator flashes blue twice. It will restore to factory default.
2. You can also tap on “unbond” (See to picture 6) in the APP to release the connection between doorbells and wireless chimes.

3. Specification

Technical Specification

Power Input	DC5V 1A
Power port	USB
Ringtones	4 ringtones
Volume	Max. 100dB
Volume control	Low(mute), Middle, High
Consumption	0.2W
Frequency	866 MHz
Connection type	Radio frequency
Place of use	indoor only
LED indicator	Flashing blue: pairing mode Solid blue: power on/ pairing succeed Flashes blue twice: reset to factory done
Working temp.	-30°C ~ 70°C
Humidity	< 90% (No condensation)
Size	Ø60 × 24mm
Weight	33g